



An
Phríomh-Oifig
Staidrimh

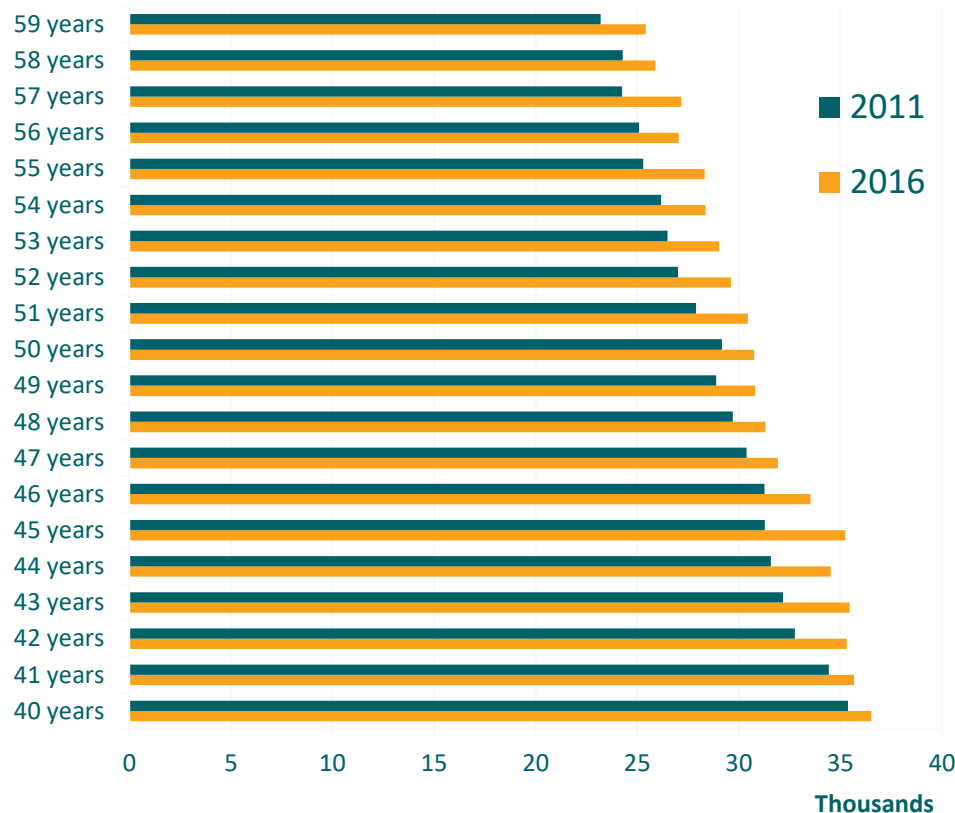
Central
Statistics
Office

Men in the Middle -What the census tells us

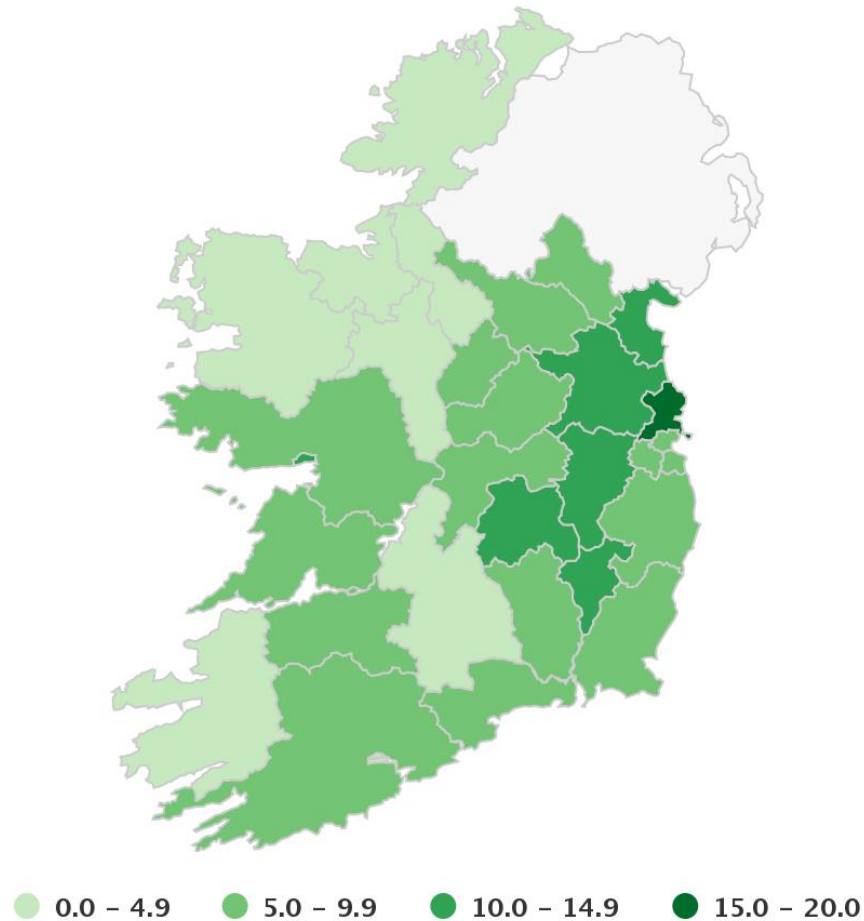
Brendan Murphy
Statistician

Age profile

- 622,376 men in Ireland aged 40 to 59 in Census 2016
- Up 45,672 or 7.9% since 2011 compared to a 3.8% increase in general population

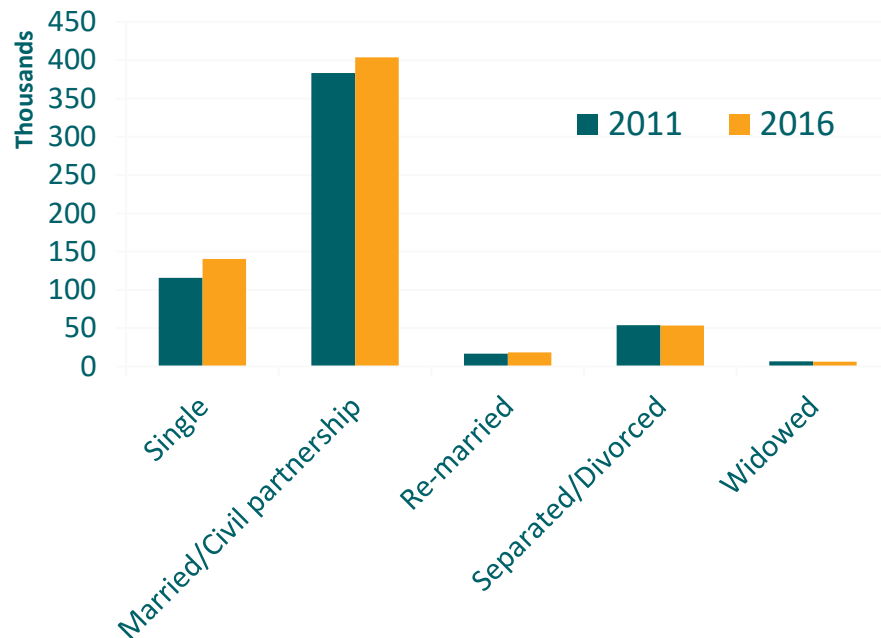


Change in males (%) aged 40–59 by county, 2011 – 2016



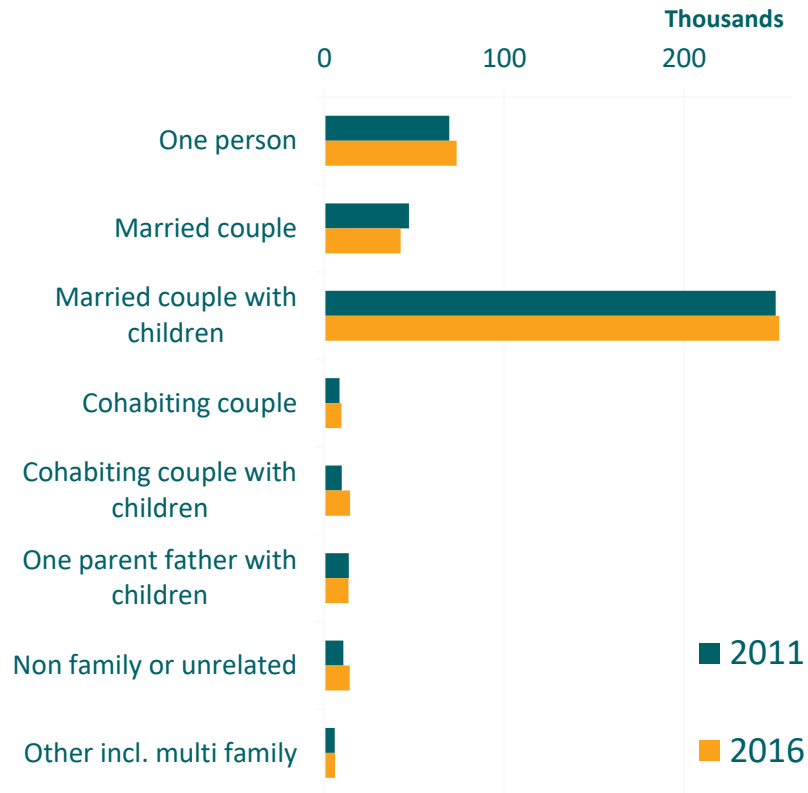
Marital Status

- 402,530 (65%) in first marriage, 1,096 in a same sex civil partnership
- 140,330 single men aged 40-59, up 21% since 2011
- 53,704 separated or divorced, 18,251 re-married
- 6,464 widowed



Household type

- 252,974 households where the head of household was a male aged 40-59
- One person households up 6%
- Cohabiting couples with children up 48%
- 13,495 one parent father households
- Non family households up 33%



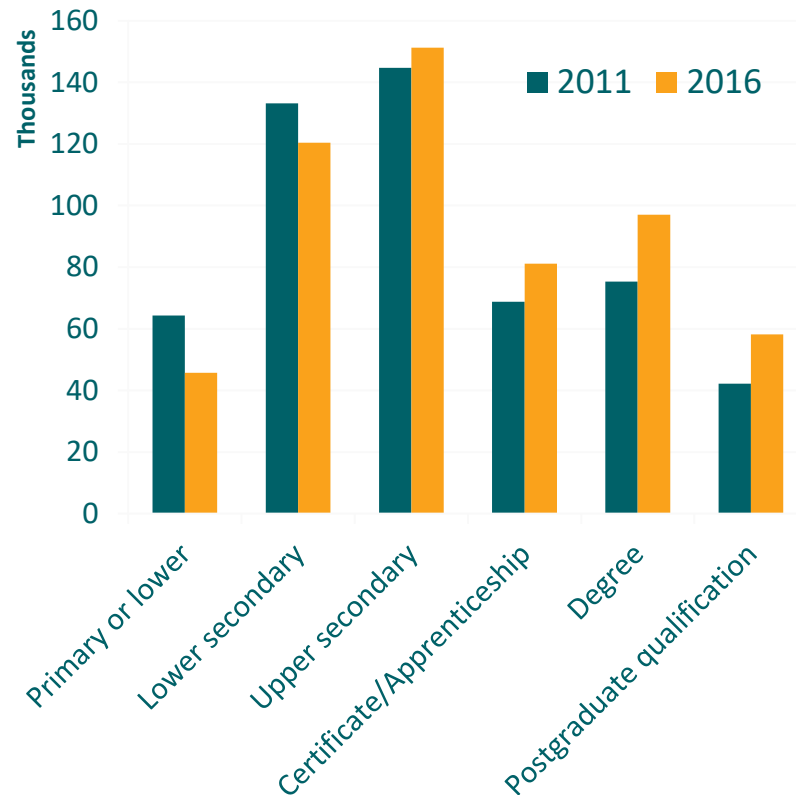
Employment

Males aged 40-59	2011	2016	Change	% change
At work	412,292	487,622	75,330	18.3%
Unemployed	96,844	67,668	-29,176	-30.1%
Student or pupil	4,751	4,616	-135	-2.8%
Looking after home/family	9,352	11,589	2,237	23.9%
Retired	13,721	10,989	-2,732	-19.9%
Unable to work due to permanent sickness or disability	37,943	37,469	-474	-1.2%
Others not in labour force	1,801	2,423	622	34.5%



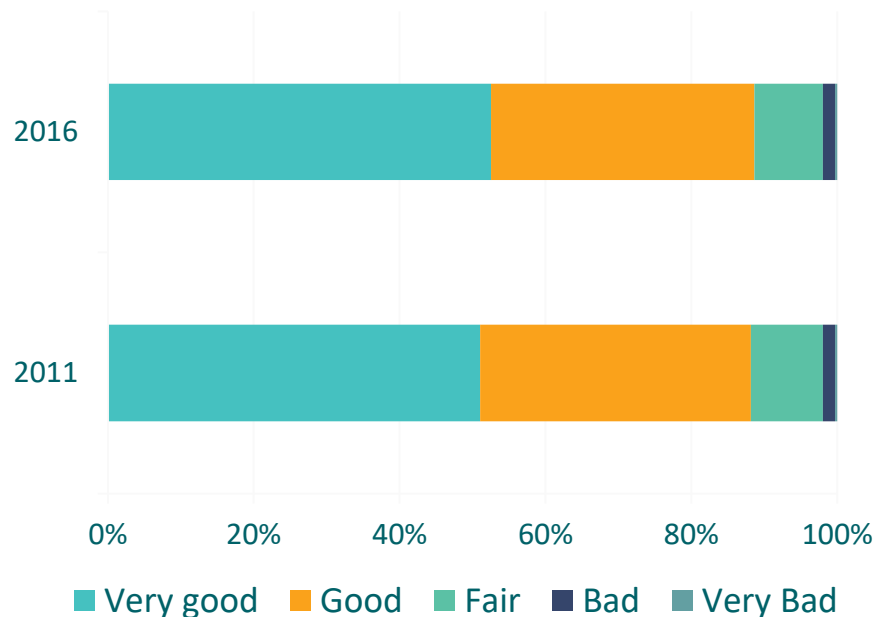
Education

- 45,695 males aged 40-59 with primary education or no formal education only, down 29%
- 97,022 with a degree, up 29%
- 58,211 with a postgraduate qualification, up 38%

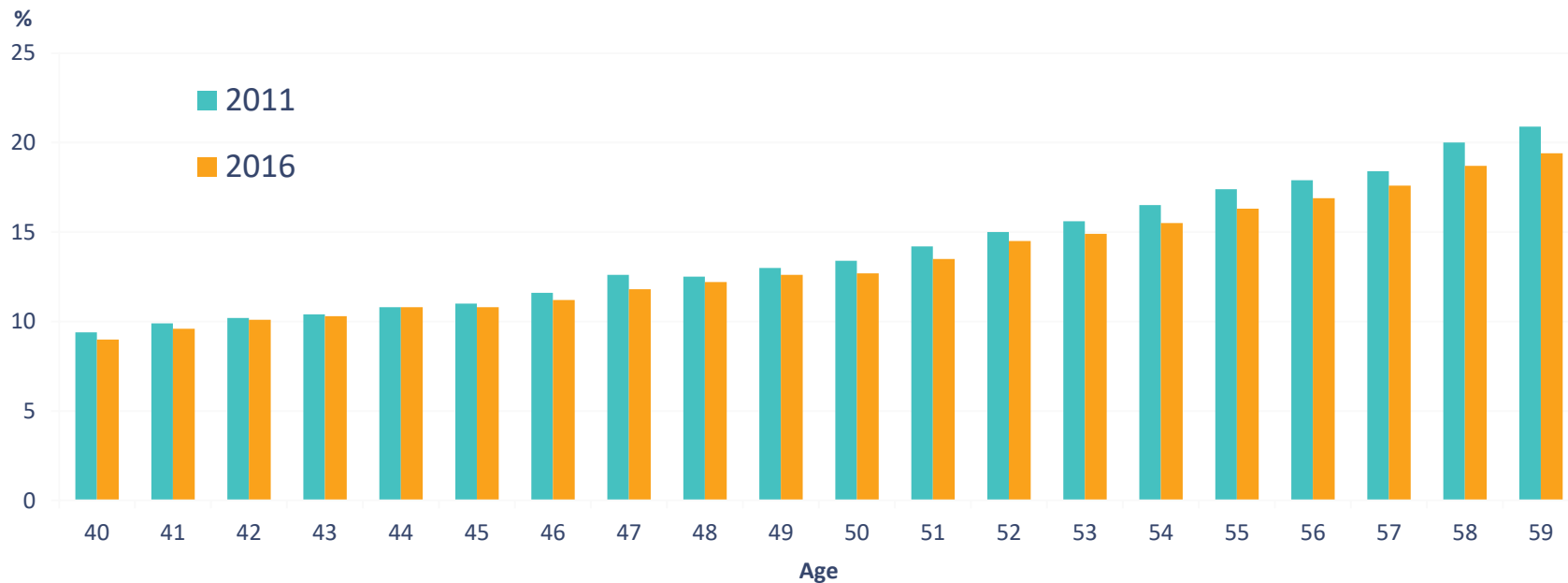


General Health

- 536,285 men (89%) reported their general health as “Very good” or “Good”
- 11,928 reported as “Bad” or “Very bad”

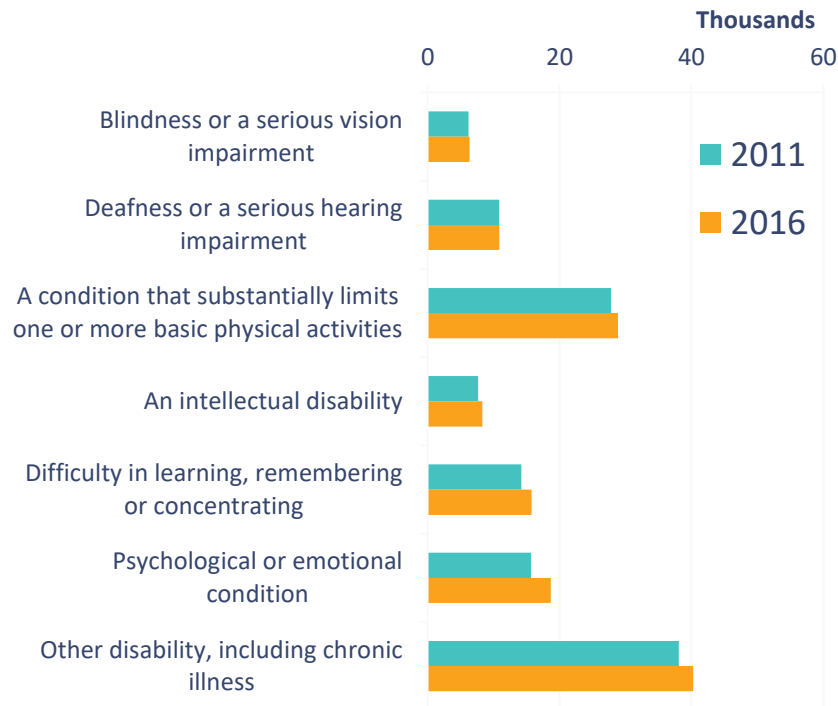


Disability rates by age



Disability types

- 40,291 men 40-59 reported having a chronic illness or condition or difficulty with pain or breathing
- 28,888 men reported having a condition that substantially limits basic physical activities
- 18,683 reported having a psychological or emotional condition, up 19%





An
Phríomh-Oifig
Staidrimh

Central
Statistics
Office

